

URECC NEWSLETTER



WHAT IS A RIGHT-OF-WAY AND WHY IS IT NECESSARY?



"KEEPING TREES AND VEGETATION CLEAR HELPS REDUCE POWER OUTAGES AND HELPS KEEP EVERYONE SAFE!"

A RIGHT-OF-WAY WHEN IT COMES TO UTILITIES, IS AN AGREEMENT THAT ALLOWS A UTILITY TO USE OR ACCESS A PIECE OF PROPERTY ACCORDING TO THE TERMS OF THE EASEMENT.

EASEMENTS ARE AREAS DESIGNATED FOR OVERHEAD AND UNDERGROUND UTILITY ACCESS, AND ARE USUALLY DEFINED WHEN A LOT OR NEIGHBORHOOD IS FIRST PLATTED. EASEMENTS ARE IMPLEMENTED BECAUSE IT IS MORE EFFICIENT AND LESS EXPENSIVE TO RUN UTILITY LINES STRAIGHT THROUGH NEIGHBORHOODS THAN IT IS TO RUN THEM AROUND PARCELS OF LAND.

HAVING RIGHT-OF-WAY MEANS THAT UTILITIES CAN ACCESS THE AREA TO FIX A UTILITY-RELATED PROBLEM OR TO PERFORM MAINTENANCE.

EASEMENTS OUTLINE GENERAL PROPERTY RIGHTS BY OTHERS WHILE RIGHT-OF-WAY (as its name implies) IS A SPECIFIC PROPERTY RIGHT.

WORKERS WHO SERVICE UTILITY LINES SHOULD ARRIVE IN A MARKED VEHICLE AND HAVE PROPER IDENTIFICATION. IF YOU HAVE ANY CONCERNS, PLEASE CALL US AT: 903-843-2536 OR 800-259-2536

WHAT ARE THE "RIGHT OF WAY" BOUNDARIES?

RIGHT-OF-WAY WIDTHS FOR MANY URECC LINES ARE 30 FEET WIDE (CAN BE MORE FOR TRANSMISSION LINES). URECC WILL TRIM ANY VEGETATION BACK 15 FEET FROM EACH SIDE OF THE POLE. MEMBERS ARE RESPONSIBLE FOR MAINTAINING VEGETATION OUTSIDE OF THE SAFETY BOUNDARY AND ANYTHING PAST THE TRANSFORMER, SERVICE WIRE, AND RIGHT-OF-WAY. URECC WILL TRIM LIMBS ONLY. URECC WILL ALSO CUT DEAD TREES THAT ARE A THREAT TO OVERHEAD PRIMARY LINES. THE MEMBER IS RESPONSIBLE TO CLEAN UP ANY LIMBS/TREES CUT THAT ARE OUT OF THE RIGHT-OF-WAY LIMITS.

WILL I BE NOTIFIED BEFORE COMING OUT FOR VEGETATION REMOVAL?

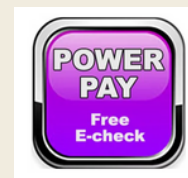
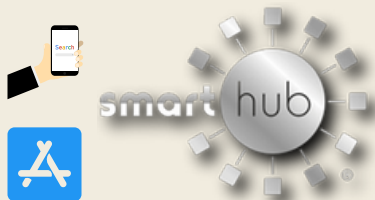
URECC WILL ATTEMPT TO NOTIFY ITS MEMBERS BY LEAVING A DOOR HANGER DETAILING THE SERVICE WORK TO BE DONE, IN PERSON OR BY PHONE.

WHY IS VEGETATION REMOVAL IMPORTANT?

VEGETATION REMOVAL HELPS KEEP EVERYONE SAFE. IT ALSO GIVES OUR SERVICEMEN AND CREWS ACCESS TO POWER LINES SAFELY, IMPROVES RELIABILITY OF ELECTRIC SERVICE AND HELPS PREVENT OUTAGES.

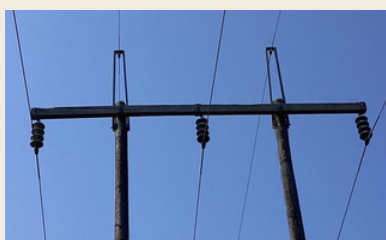
WHAT CAN I DO TO HELP PREVENT TREE-RELATED OUTAGES?

PLEASE REFRAIN FROM PLANTING TREES OR SHRUBS WITHIN THE RIGHT-OF-WAY AND NOTIFYING URECC OF POTENTIAL TREE HAZARDS. URECC VEGETATION CREWS WORK YEAR-ROUND TO MAINTAIN THE RIGHT-OF-WAYS TO HELP KEEP EVERYONE SAFE, AND TO PREVENT AND REDUCE OUTAGES CAUSED BY FALLING LIMBS AND TREES. IF YOU SEE OR FORESEE A HAZARDOUS CONDITION OR SITUATION DUE TO BRANCHES OR TREES CLOSE TO POWER LINES, PLEASE CONTACT MEMBER SERVICES AT 903-843-2536 OR 1-800-259-2536.



"POWER PAY-FREE E-CHECK" IS NOW AVAILABLE ON THE SMARTHUB APP AND AT THE TOP OF THE URECC WEBSITE PAGE.

June 16th, 2023, storm repairs continue..

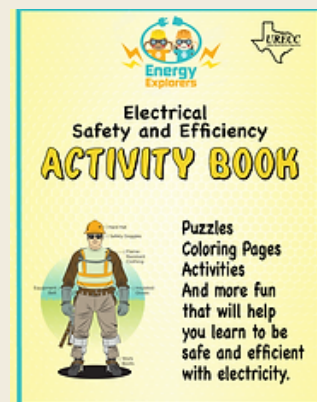


URECC IS STILL WORKING HARD AND WILL CONTINUE PUTTING IN ALL EFFORTS TO RESTORE THE DAMAGES CAUSED BY THE STORM ON JUNE 16, 2023.

OUR URECC TEAM HAS BEEN BUSY CUTTING DOWN TREES, CLEANING UP DEBRIS, AND REPAIRING DAMAGED EQUIPMENT, INCLUDING TRANSMISSION LINES. CURRENTLY, ABOUT A DOZEN TRANSMISSION STRUCTURES IN THE NESBITT AREA ARE BEING COMPLETELY REPAIRED, LOCATED IN THE LITTLE CYPRESS AREA, WHICH CONSISTS OF SWAMPY TERRAIN.

CONTRACTORS ARE ALSO WORKING HARD TO COMPLETE REPAIRS AND DAMAGE, HAVING TO USE A CRANE FOR MOST OF THE REPAIRS.

ALL OF US AT URECC WOULD LIKE TO THANK YOU FOR YOUR PATIENCE AS WE CONTINUE THE CLEANUP PROCESS AND WORK THAT WILL ENHANCE RELIABILITY TO OUR MEMBERS.



URECC just for Kids!

URECC.COOP



'TACO PUFFS'

INGREDIENTS:

- 1 POUND GROUND BEEF
- 1/2 CUP ONION
- 1 PACKAGE TACO SEASONING
- 2 TUBES LARGE REFRIGERATED FLAKY BISCUITS
- 2 CUPS SHREDDED CHEESE

DIRECTIONS:

1. PREHEAT OVEN TO 400 DEGREES. COOK GROUND BEEF AND ONION TOGETHER UNTIL FULLY COOKED AND THERE IS NO PINK. DRAIN AND ADD TACO SEASONING ACCORDING TO PACKAGE DIRECTIONS. COOL SLIGHTLY.
2. FLATTEN HALF THE BISCUITS INTO 4 IN CIRCLES, ARRANGE ON GREASED BAKING PANS. SPOON 1/4 CUP MEAT MIXTURE ONTO EACH CIRCLE; SPRINKLE EACH WITH 1/4 CUP CHEESE. FLATTEN REMAINING BISCUITS; PLACE OVER FILLING AND PINCH EDGES TO SEAL TIGHTLY.
3. BAKE UNTIL GOLDEN BROWN 12-15 MINUTES.



SERVE ALONGSIDE A BOWL OF SOUP, CHIPS AND SALSA OR A FRESH GREEN SALAD!



URECC.COOP

