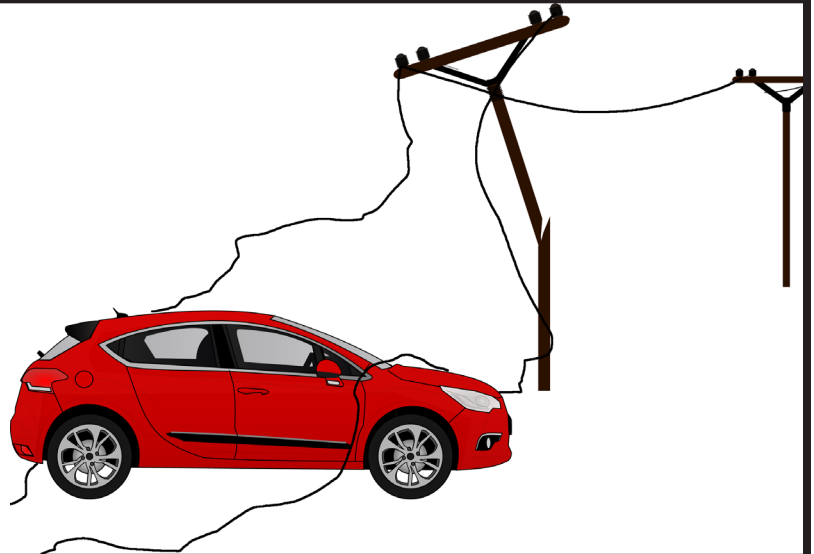


# If a Power Line Falls on Your Car

A power line making contact with a passenger vehicle due to a traffic accident or storm can create an extremely dangerous situation for those inside the vehicle. A wrong move can be deadly. If you should ever find yourself in this position, or see someone else in this predicament, caution is of extreme importance. Electricity will flow from the downed line through the car trying to reach the ground to complete the circuit. The rubber tires prevent the power from reaching the ground. If you attempt to get out and you touch the ground, while at the same time touching the energized car, YOU have just become a part of the grounded circuit. This means electricity will flow through you while making it's way to the ground, causing electrocution. TO AVOID ELECTROCUTION please read and remember the following steps.

## If you are in the vehicle:

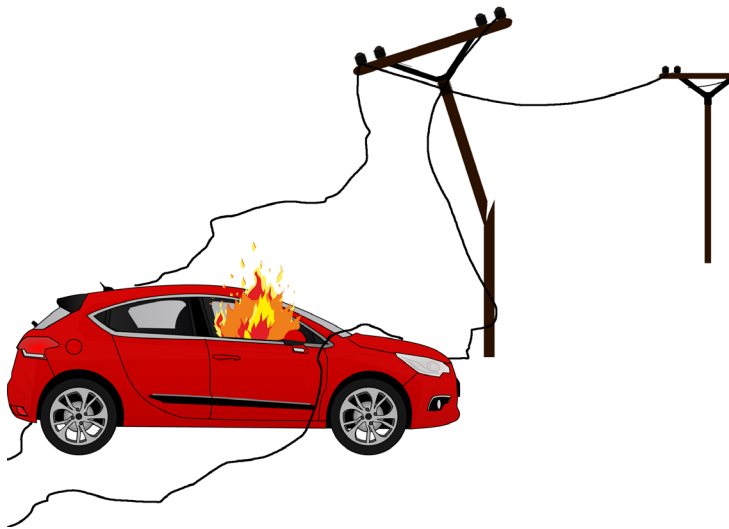
1. Do not get out of the car!
2. Call 911 for help.
3. Wait in the car until help arrives.
4. Warn others to not approach the car in attempt to help.
5. Once help arrives and they have verified the power to the lines has been stopped you may safely exit the car.



If you are in a vehicle and you see power lines down around you but do not see them contacting your car, follow the above steps anyway until the police, fire department, or a lineman arrives and verifies that you are safe to exit the vehicle. The line may be making contact with your vehicle in a location you cannot see from within your car. Also, if the line is close to the car, electricity could “ARC”, or jump to the car from the downed line.

## What if the vehicle is on fire and I have to get out?:

1. Open your vehicle door.
2. Put your feet together on the bottom edge of the doorway.
3. Without touching the vehicle with your hands, and your feet together tightly, jump as far away from the vehicle as possible. Keep your feet together,
4. Keeping your feet together, always touching, shuffle at least 35 feet away from the vehicle and the closest downed power line.
5. Warn others to stay clear of the vehicle until first responders arrive.



**In any situation ALWAYS assume a downed power line is live and dangerous. Always staying safe can save lives.**