

# URECC News



April 2023

For the members of Upshur Rural Electric Cooperative

## Weather Safety and Preparedness

### Be Prepared for Severe Weather

Spring brings warmer weather, blooming plants and trees, and unfortunately, thunderstorms and even tornados. It is always best to be prepared for unexpected weather. You and your family's safety could depend on it. Here are just a few tips for URECC members.

**1. Know the county that you live in and the names of nearby major cities.** **SEVERE THUNDERSTORM WARNINGS** are issued on a county by county basis with the names of major cities highlighted in the warnings.

**2. Have a NOAA Weather Radio in your home or place of business.** Some receivers are specially built to alarm any time a severe weather Watch or Warning is issued by the National Weather Service.

**3. Have a standby generator.** If storms or tornados damage the electric grid badly, sometimes it can take days or even weeks to repair the system and restore power. A small portable generator can run your refrigerator, give you some light, and basic appliances. This can possibly keep you in your home, rather than forcing you to seek shelter else where.

**4. Make sure you are aware of the best spot in your home to take shelter from severe weather.** The most appropriate place is usually an interior room on the lowest floor of your home and away from windows. If you know severe weather is approaching or a **SEVERE THUNDERSTORM WARNING** is issued, seek shelter immediately!! Being in a sturdy building on the lowest floor and away from windows is the only safe place in a severe thunderstorm!! Automobiles, boats, or out in the open are not safe places in severe thunderstorms.

### 5 steps for creating a family plan

Planning ahead can save lives and homes, and offer peace of mind.

1. Put together an emergency supply kit.
2. Discuss escape routes from each room of the house as well as from your neighborhood.
3. Make sure all family members know how to get in touch with one another even if phone service is disrupted, such as meeting at a designated place or reporting in with emergency responders.
4. Create a checklist of what to do before you leave, such as boarding or shuttering windows, trimming tree branches that could hit your home, turning off electricity at the circuit breaker or fuse box, and turning off gas at the meter or tank.
5. Plan what to do with pets and livestock.

### Safety Tips - Live to Tell

Storms often bring downed lines. The following tips can keep you safe:

\*If you see a downed power line, move away from the line and anything touching it. The human body is a ready conductor of electricity.

\*The proper way to move away from the line is to shuffle away with small steps, keeping your feet together and on the ground at all times. This will minimize the potential for a strong electric shock.

\*If you see someone who is in direct or indirect contact with the downed line, do not touch the person. You could become the next victim. Call 911 instead.

\*Do not attempt to move a downed power line or anything in contact with the line by using another object such as a broom or stick. Even non-conductive materials like wood or cloth, if slightly wet, can conduct electricity and then electrocute you.

\*Be careful not to put your feet near water where a downed power line is located.

\*If you are in your car and it is in contact with the downed line, stay in your car. Tell others to stay away from the vehicle.

\*If you must leave your car because it's on fire, jump out of the vehicle with both feet together. Do not touch the live car and the ground at the same time. This way you avoid being the path of electricity from the car to the earth. Shuffle away with small steps keeping your feet together and on the ground at all times.

\*Do not drive over downed lines.

\*After a storm or other event, do not attempt to disconnect or move downed lines. Call for assistance and stay away!



# VEGETATION REMOVAL

Keeping trees and vegetation clear on right-of-ways reduces power outages and also helps keep everyone **SAFE**.

## What are the “right of way” boundaries?

Right-of-Way widths for many URECC lines is 30 feet wide (can be more for transmission lines). URECC will trim any vegetation back 15 feet from each side of the pole. Members are responsible for maintaining vegetation outside of the safety boundary and anything past the transformer, service wire, and right-of-way. URECC will trim limbs only. URECC will also cut dead trees that are a threat to overhead primary lines. The member is responsible to clean up any limbs/trees cut that are out of the right-of-way limits.

## Will I be notified before coming out for vegetation removal?

URECC will ATTEMPT to notify its members by leaving a door hanger detailing the service work to be done, in person or by phone.

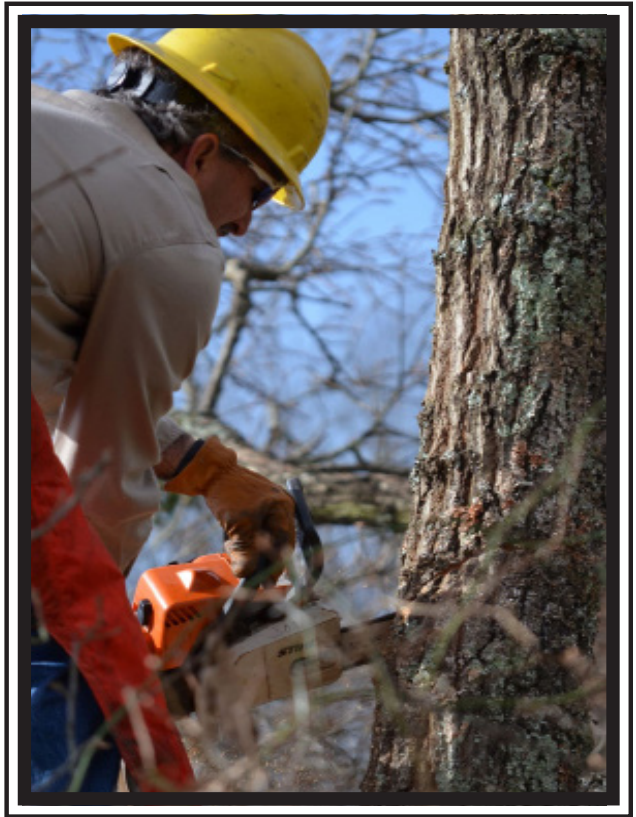
## Why is vegetation removal important?

Vegetation removal helps keep everyone SAFE. It also gives our service men and crews access to power lines safely, improves reliability of electric service and helps prevent outages.

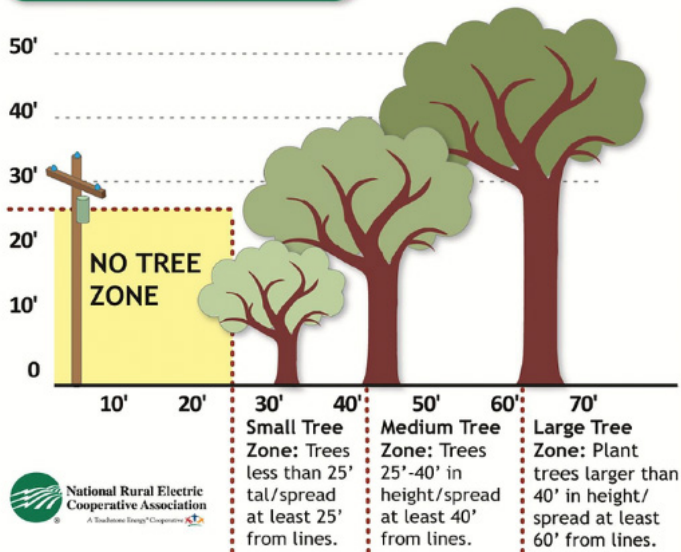
## What can I do to help prevent tree-related outages?

Please refrain from planting trees or shrubs within the right of way and cut notifying URECC of potential tree hazards.

*URECC vegetation crews work year-round to maintain the right-of-ways to help keep everyone safe, and to prevent and reduce outages caused by falling limbs and trees. If you see or foresee a hazardous condition or situation due to branches or trees close to power lines, please contact Member Services at 1-800-259-2536.*



## Tree Planting Guide



## Spicy Deviled Eggs

### Ingredients

- 12 hard-boiled eggs (peeled)
- \* 1/2 cup mayonnaise - (use spicy mayo if you wish)
- \* 1 tablespoon spicy dijon mustard
- \* 1-2 teaspoons hot sauce
- \* 1/4 cup sweet relish
- \* 1/2 teaspoon cayenne pepper or Cajun seasoning
- \* Black pepper, onion powder & garlic powder (season to taste)
- \* Dill weed and smoked paprika - (garnish)



### Instructions

- \* Slice eggs in half and place yolks in a bowl.
- Mash yolks with a fork until they resemble small crumbs.
- \* Mix in mayonnaise, dijon mustard, hot sauce and sweet relish.
- \* Add in black pepper, onion powder, garlic powder, and cayenne pepper or Cajun seasoning.
- \* Stir to combine all ingredients.
- Place filling in piping bag and add filling to each egg.
- \* Garnish with smoked paprika and dill weed.

## UNDERGROUND LINE LOCATES:



Make sure to call 811 before you dig. IT IS THE LAW. Your location may contain underground utility lines. Knowing where utility lines are buried before you begin digging can help you avoid injury, service outages, and repair costs. Call ahead of time so there is proper time to mark your utilities. Also, you should be aware of your own septic tanks and irrigation lines. Call 811 and you will be routed to your local call center.